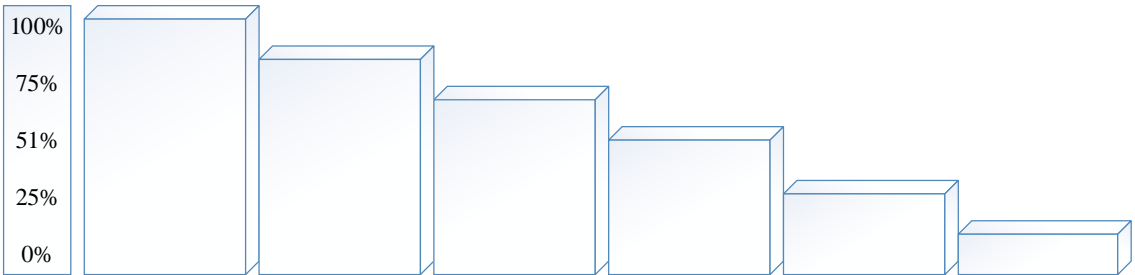


STANDARDS OF PROBABILITY AND ASSESSMENT OF FUTURE RISK
February 2017

International protection determinations are conducted with a two-stage approach. Stage one is the gathering of relevant information, the identification of the material facts of the application and the determination on the Balance of Probabilities which of the Applicant's statements and other evidence can be accepted. Stage two is the analysis of the well-founded fear of persecution and real risk of serious harm.



%	BEYOND ANY DOUBT	BEYOND A REASONABLE DOUBT [Criminal Standard of Proof]	INTIME CONVICTION [French Civil Law Standard]	BALANCE OF PROBABILITIES [Used in proving facts in an asylum claim in many Common Law countries]	A REASONABLE CHANCE [Used in determining future persecution or harm or past facts in some countries]	LESS THAN A REASONABLE CHANCE
]		

The chart above is representational only. It is meant to give a simplified view of how 'standards of probability' and 'assessments of future risk' operate. There are many such 'standards' but this chart seeks to identify only the more common ones. The numerical values are inserted only for scale purposes and do not represent a 'numerical' factor which each level should reach.